



## Rabbit Anti-Human S100 Beta Monoclonal Antibody (Clone SP127)

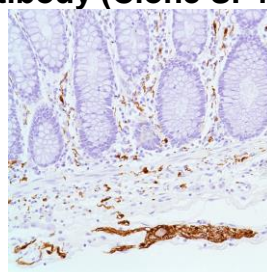
### CATALOG #:

**M4270** 0.1 ml rabbit monoclonal antibody purified by protein A/G in PBS/1% BSA buffer pH 7.6 with less than 0.1% sodium azide.

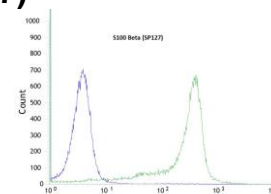
**M4272** 0.5 ml rabbit monoclonal antibody purified by protein A/G in PBS/1% BSA buffer pH 7.6 with less than 0.1% sodium azide.

**M4274** 1.0 ml rabbit monoclonal antibody purified by protein A/G in PBS/1% BSA buffer pH 7.6 with less than 0.1% sodium azide.

**M4271** 7.0 ml pre-diluted rabbit monoclonal antibody purified by protein A/G in TBS/1% BSA buffer pH 7.6 with less than 0.1% sodium azide.



Human colon stained with anti-S100 beta antibody



Flow cytometric analysis of rabbit anti-S100 beta (SP127) antibody in HeLa (green) compare to negative control of rabbit IgG (blue)

### INTENDED USE:

For Research Use Only. Not for use in diagnostic procedures.

### CLONE:

SP127

### IMMUNOGEN:

Full length recombinant human S100 beta.

### IG ISOTYPE:

Rabbit IgG

### EPITOPE:

Not determined

### MOLECULAR WEIGHT:

11kDa

### SPECIES REACTIVITY:

Human (tested). (See [www.springbio.com](http://www.springbio.com) for information on species reactivity predicted by sequence homology.)

### DESCRIPTION:

S100 belongs to the family of calcium binding proteins such as calmodulin and troponin C. S100A is composed of an alpha and beta chain whereas S100B is composed of two beta chains. S100 is highly expressed in melanocyte, nerve cells, and their tumors. S100 protein is also expressed in the antigen presenting cells such as the Langerhans cells in skin and interdigitating reticulum cells in the paracortex of lymph nodes.

### APPLICATIONS:

Immunohistochemistry (IHC) and Flow Cytometry

### IHC PROCEDURE:

**Specimen Preparation:** Formalin-fixed, paraffin-embedded tissues are suitable for use with this primary antibody.

**Deparaffinization:** Deparaffinize slides using xylene or xylene alternative and graded alcohols.

**Antibody Dilution:** If using the concentrate format of this product, dilute the antibody 1:100. The dilutions are estimates; actual results may differ because of variability in methods and protocols.

**Antigen Retrieval:** None

**Primary Antibody Incubation:** Incubate for 10 minutes at room temperature.

**Slide Washing:** Slides must be washed in between steps. Rinse slides with PBS/0.05% Tween.

**Visualization:** Detect the antibody as instructed by the instructions provided with the visualization system.

### IHC POSITIVE CONTROL:

Colon, melanoma

### FLOW CYTOMETRY:

Recommended starting protocol: Dilute the antibody 1:100. Incubate for 30 minutes at 4°C. The dilution is an estimate; actual results may differ because of variability in methods and protocols. Optimal dilution and procedure should be determined by the end user.

**FLOW CYTOMETRY  
POSITIVE CONTROL:**

HeLa Cell Line

**CELLULAR LOCALIZATION:**

Cytoplasm, nucleus

**STORAGE & STABILITY:**

Store at 2-8°C. Do not freeze. The user must validate any other storage conditions. When properly stored, the reagent is stable to the date indicated on the label. Do not use the reagent beyond the expiration date.

There are no definitive signs to indicate instability of this product; therefore, positive and negative controls should be tested simultaneously with unknown specimens.

If unexpected results are observed which cannot be explained by variations in laboratory procedures and a problem with the reagent is suspected, contact Technical Support at [spring.tech@ventana.roche.com](mailto:spring.tech@ventana.roche.com).

**WARNINGS &  
PRECAUTIONS:**

1. Avoid contact of reagents with eyes and mucous membranes. If reagents come into contact with sensitive areas, wash with copious amounts of water.
2. This product is harmful if swallowed.
3. Consult local or state authorities with regard to recommended method of disposal.
4. Avoid microbial contamination of reagents.